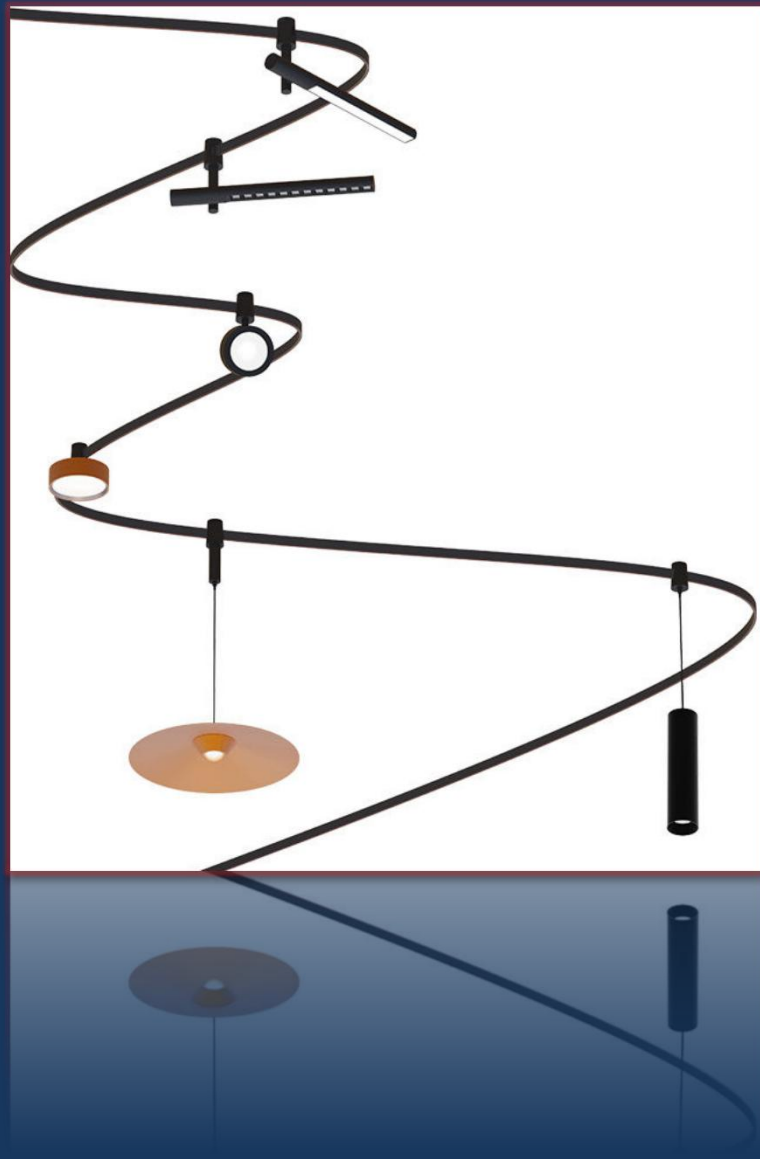


PRILLUMEN

Flexible Magnetic Track Light System

“Soft Curves. Strong Impact. Infinite Possibilities”

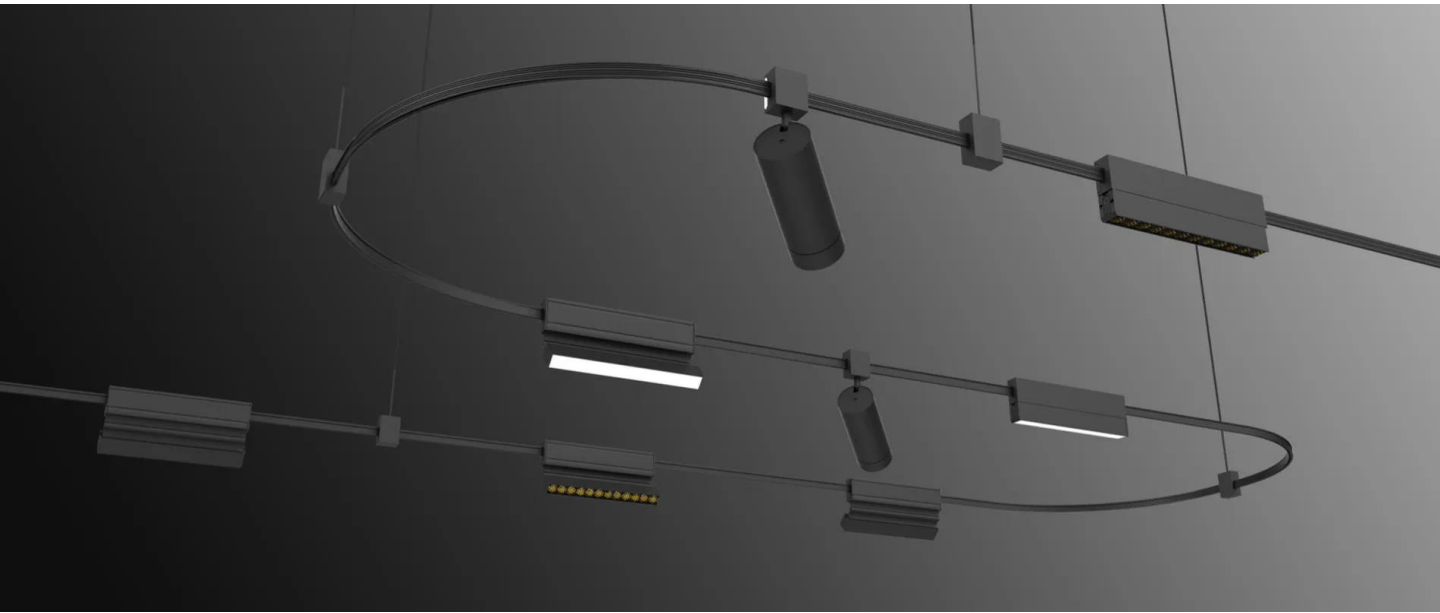


COLLECTION

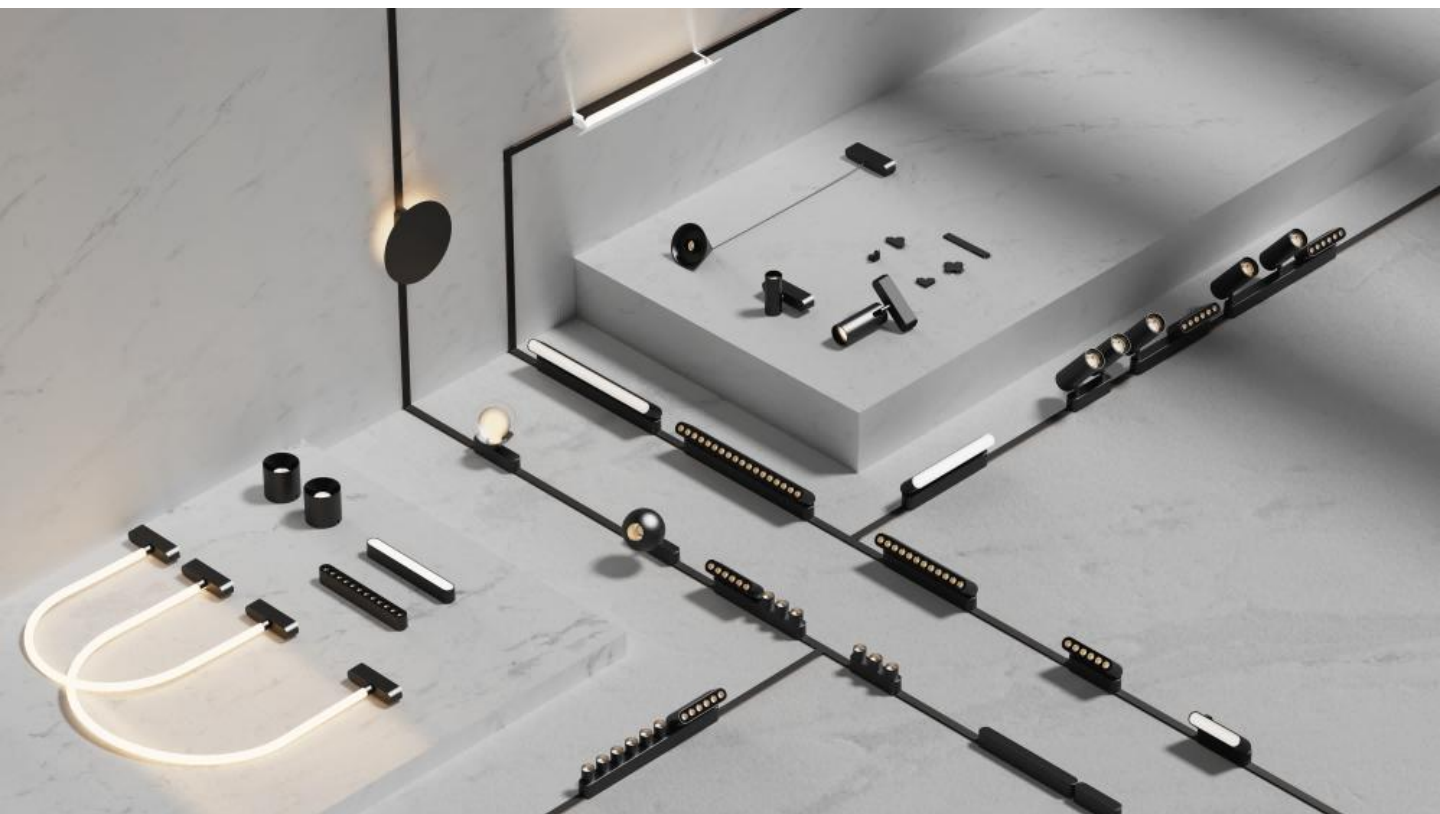
info@prillum.com

Prillummen

Flexible Magnetic Track Light



Shape Your Light, Your Way.



Your Reputation Matters
info@prillummen.com

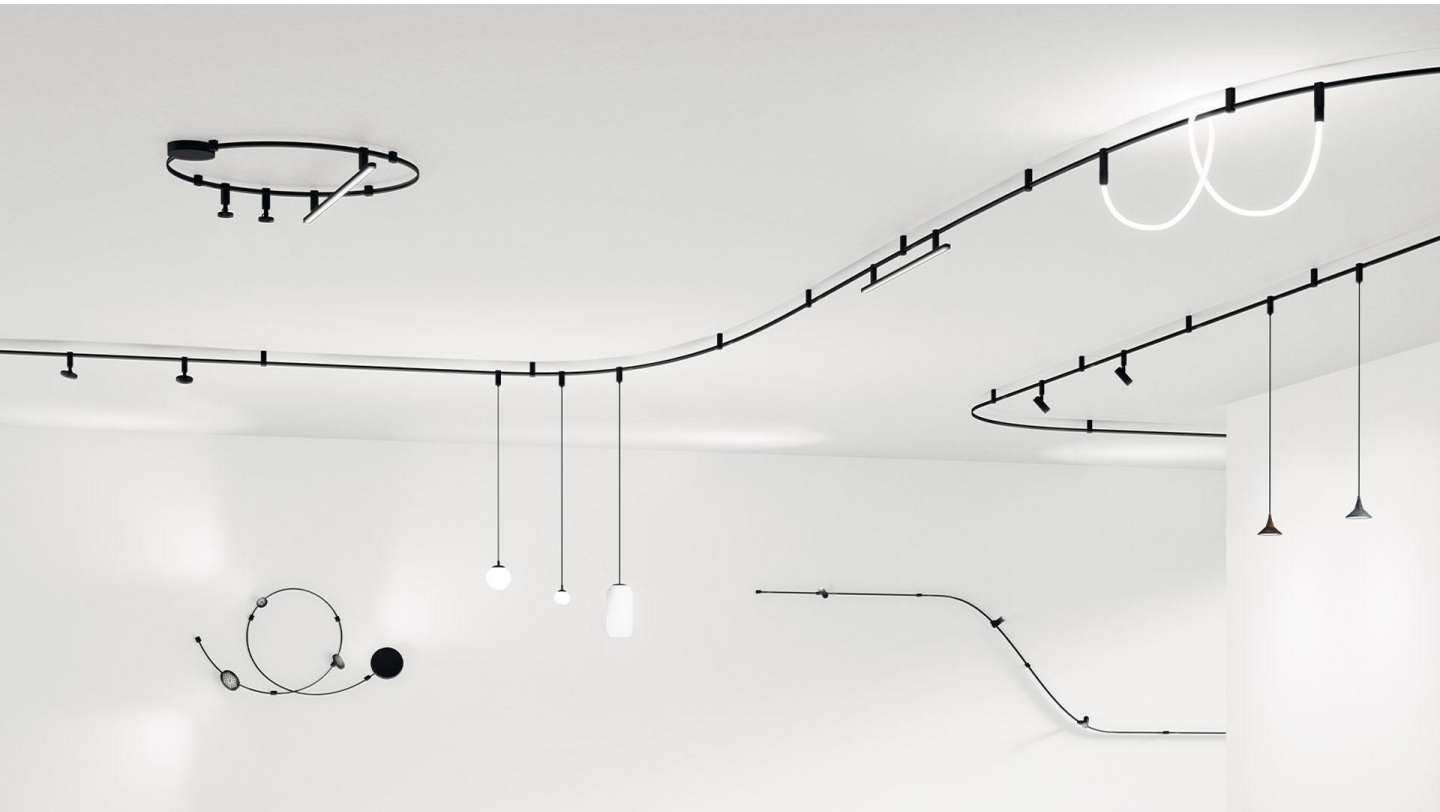
For more LED lights visit
<https://prillummen.com>

Prillummen

Flexible Magnetic Track Light



Start Designing with Magnetic Freedom



Your Reputation Matters
info@prillummen.com

For more LED lights visit
<https://prillummen.com>

✓ Key Features-Flexible Magnetic Track Light System

1. Flexible Soft Track Body

Crafted from bendable yet durable materials, the track can be easily curved or shaped to match architectural contours — perfect for wave patterns, circular layouts, or free-form lighting designs.

2. Magnetic Tool-Free Mounting

Luminaires snap in and out effortlessly with integrated magnetic connectors, allowing for quick reconfiguration, easy maintenance, and seamless upgrades without tools.

3. Wide Compatibility with Modular Fixtures

Supports various lighting modules such as spotlights, linear lights, pendants, and decorative fixtures — all magnetically attached for ultimate layout freedom.

4. Surface, Suspended & Recessed Installation

Offers versatile mounting options for ceiling, wall, or suspended applications, suitable for residential, commercial, retail, and hospitality environments.

5. Low Voltage & Safe Operation

Utilizes 48V low-voltage system ensuring safe, energy-efficient performance, ideal for public and private spaces.

6. Clean, Minimalist Aesthetic

The slim, unobtrusive design blends seamlessly into any modern interior while enhancing architectural beauty with soft curves and elegant light effects.

7. Customizable Lengths & Layouts

Track lengths can be tailored to project requirements, with connectors and flexible joints supporting complex or continuous lighting lines.

8. OEM/ODM Friendly Design

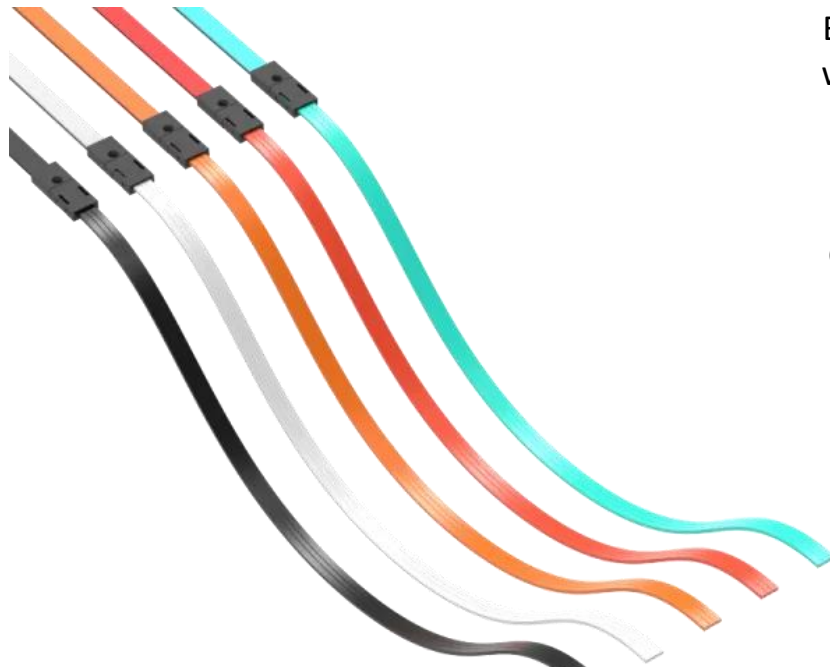
Modular structure and flexible production allow for custom finishes, fixture shapes, and branding — ideal for project-based and branded lighting solutions.

Coloful Magnetic Track Rail

Bend Light. Add Color. Define Your Space

Bring bold creativity to modern lighting with our Flexible Colorful Magnetic Rail System — a new era of architectural lighting that merges form, flexibility, and color expression. Designed for designers, architects, and trendsetters, this system allows you to shape your light and make a visual statement at the same time.

Whether you're designing a boutique, hotel lobby, gallery, or lifestyle showroom, the colorful track body blends high-end function with custom aesthetic impact.



Prillum

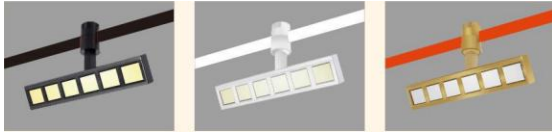
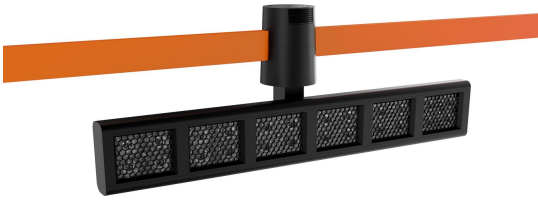
Flexible Magnetic Track Light



Your Reputation Matters
info@prillum.com

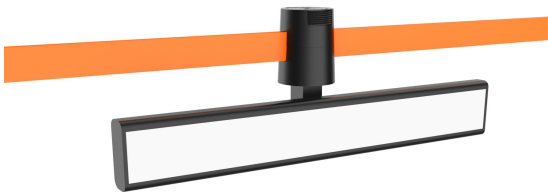
For more LED lights visit
<https://prillum.com>

Grille Blade



Model	PR-GS10W	PR-GS15W
Dimension	32*230mm	32*345mm
Wattage	10W	15W
Material	Aluminum	Aluminum
Voltage	48V	48V
CRI	90	90
CCT	NW, WW, CW	NW, WW, CW
Beam Angle	24°	24°
Finish	Black/White/Gold	Black/White/Gold

Diffused Blade



Model	PR-FG1803	PR-FG1804
Dimension	32*230mm	32*345mm
Wattage	10W	18W
Material	Aluminum	Aluminum
Voltage	48V	48V
CRI	90	90
CCT	NW, WW, CW	NW, WW, CW
Beam Angle	24°	24°
Finish	Black/White/Gold	Black/White/Gold

Spotlight



Model	PR-GD1805	PR-GD1806
Dimension	40*120mm	60*180mm
Wattage	9W	15W
Material	Aluminum	Aluminum
Voltage	48V	48V
CRI	90	90
CCT	NW, WW, CW	NW, WW, CW
Beam Angle	24°	24°
Finish	Black/White/Gold	Black/White/Gold

Adjustable Spotlight



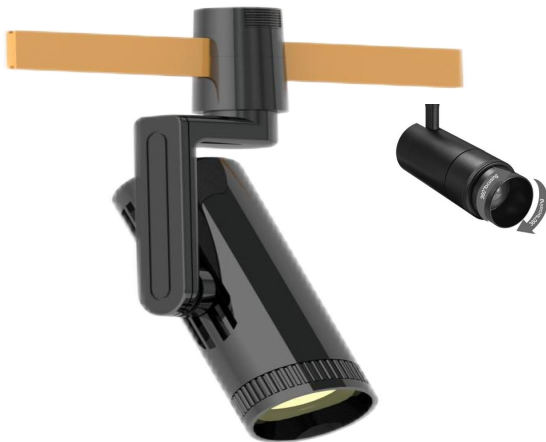
Model	PR-GD1810
Dimension	40*117mm
Wattage	7W
Material	Aluminum
Voltage	48V
CRI	90
CCT	NW, WW, CW
Beam Angle	24°
Finish	Black/White/Gold

Spotlight



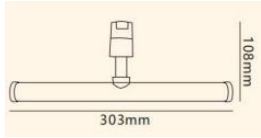
Model	PR-GD1807	PR-GD1808	PR-GD1809
Dimension	45*115mm	55*135mm	65*135mm
Wattage	10W	20W	30W
Material	Aluminum	Aluminum	Aluminum
Voltage	48V	48V	48V
CRI	90	90	90
CCT	NW, WW, CW	NW, WW, CW	NW, WW, CW
Beam Angle	24°	24°	24°
Finish	Black/White Gold	Black/White Gold	Black/White Gold

Zoomable Spotlight



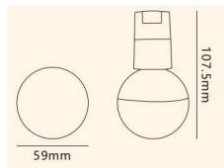
Model	PR-GD1811	PR-GD1812
Dimension	45*120mm	55*140mm
Wattage	10W	20W
Material	Aluminum	Aluminum
Voltage	48V	48V
CRI	90	90
CCT	NW, WW, CW	NW, WW, CW
Beam Angle	15-55°	15-55°
Finish	Black/White/Gold	Black/White/Gold

Tube Blade



Model	PR-DG1813	PR-DG1814
Dimension	303*108mm	603*108mm
Wattage	10W	20W
Material	Aluminum	Aluminum
Voltage	48V	48V
CRI	90	90
CCT	NW, WW, CW	NW, WW, CW
Beam Angle	280°	280°
Finish	Black/White/Gold	Black/White/Gold

Semi-soft Ball



Model	PR-YQ1815
Dimension	60*105mm
Wattage	7W
Material	Aluminum
Voltage	48V
CRI	90
CCT	NW, WW, CW
Beam Angle	360°
Finish	Black/White/Gold

Semi-Flexible Ball



Model	PR-YQ1816
Dimension	150*100mm
Wattage	7W
Material	Aluminum
Voltage	48V
CRI	90
CCT	NW, WW, CW
Beam Angle	360°
Finish	Black/White/Gold

Spherical Hanging Ball



Model	PR-DX1832
Dimension	120*120mm
Wattage	7W
Material	Aluminum
Voltage	48V
CRI	90
CCT	NW, WW, CW
Beam Angle	360°
Finish	Black/White/Gold

Semi-Flexible Ball



Model	PR-YQ1820
Dimension	150*100mm
Wattage	5W
Material	Aluminum
Voltage	48V
CRI	90
CCT	NW, WW, CW
Beam Angle	360°
Finish	Black/White/Gold

Semi-flexible Acrylic flood light



Model	PR-YQ1821
Dimension	100*95mm
Wattage	10W
Material	Aluminum
Voltage	48V
CRI	90
CCT	NW, WW, CW
Beam Angle	120°
Finish	Black/White/Gold

Round Grille Light



Model	PR-YS1818
Dimension	140*35*90mm
Wattage	10W
Material	Aluminum
Voltage	48V
CRI	90
CCT	NW, WW, CW
Beam Angle	24°
Finish	Black/White/Gold

Semi-flexible Acrylic flood light



Model	PR-YF1819
Dimension	140*35*90mm
Wattage	10W
Material	Aluminum
Voltage	48V
CRI	90
CCT	NW, WW, CW
Beam Angle	105°
Finish	Black/White/Gold

Semi-flexible Spotlight



Model	PR-MZ1817
Dimension	38*100mm
Wattage	7W
Material	Aluminum
Voltage	48V
CRI	90
CCT	NW, WW, CW
Beam Angle	24°
Finish	Black/White/Gold

Circular Tube Lamp



Model	PR-YH1823
Dimension	220*280mm
Wattage	8W
Material	Aluminum
Voltage	48V
CRI	90
CCT	NW, WW, CW
Beam Angle	360°
Finish	Black/White/Gold

Semi-flexible silicone light



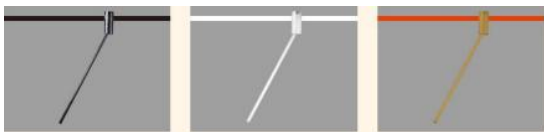
Model	PR-DG1824	PR-DG1825
Dimension	1000mm	2000mm
Wattage	10W	20W
Material	Aluminum+PC	Aluminum+PC
Voltage	48V	48V
CRI	90	90
CCT	NW, WW, CW	NW, WW, CW
Beam Angle	360°	360°
Finish	Black/White/Gold	Black/White/Gold



Semi-flexible D12 Long Tube Lamp



Model	PR-XS1822
Dimension	10*600mm
Wattage	2W
Material	Aluminum+PC
Voltage	48V
CRI	90
CCT	NW, WW, CW
Beam Angle	18°
Finish	Black/White/Gold



Rotating Tube Flood Light



Model	PR-PJ1826
Dimension	25*500mm
Wattage	15W
Material	Aluminum+PC
Voltage	48V
CRI	90
CCT	NW, WW, CW
Beam Angle	105°
Finish	Black/White/Gold

Rotating Grille Flood Light



Model	PR-PJ1827
Dimension	25*500mm
Wattage	15W
Material	Aluminum+PC
Voltage	48V
CRI	90
CCT	NW, WW, CW
Beam Angle	24°
Finish	Black/White/Gold

Semi-flexible Conical Spotlight



Model	PR-YJ1828
Dimension	160*66mm
Wattage	7W
Material	Aluminum+PC
Voltage	48V
CRI	90
CCT	NW, WW, CW
Beam Angle	24°
Finish	Black/White/Gold

Semi-flexible Conical Acrylic Spotlight



Model	PR-PJ1829
Dimension	85*120mm
Wattage	7W
Material	Aluminum+PC
Voltage	48V
CRI	90
CCT	NW, WW, CW
Beam Angle	105°
Finish	Black/White/Gold

Acrylic Hanging Lamp



Model	PR-YJ1830
Dimension	85*85mm
Wattage	7W
Material	Aluminum+PC
Voltage	48V
CRI	90
CCT	NW, WW, CW
Beam Angle	105°
Finish	Black/White/Gold

Universal Hanging Light



Model	PR-DX1831
Dimension	70*100mm
Wattage	7W
Material	Aluminum+PC
Voltage	48V
CRI	90
CCT	NW, WW, CW
Beam Angle	24°
Finish	Black/White/Gold

Components



Recessed hanging hardware



Surface mounted hanging hardware



Input conductive module



Plastic Fixings



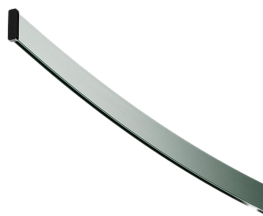
Hardware Fixings



End Cap



Corner module



Flexible Track Rail



Extension Pole

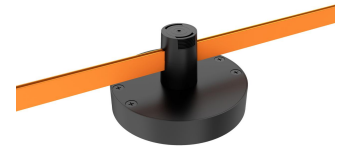
Components



Hardware double-rotating pole



Double head input conductive module



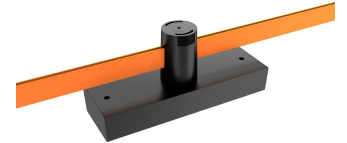
Single Color Power Supply



Round conductive accessories



Round hardware hanging accessories



Single Color Power Supply

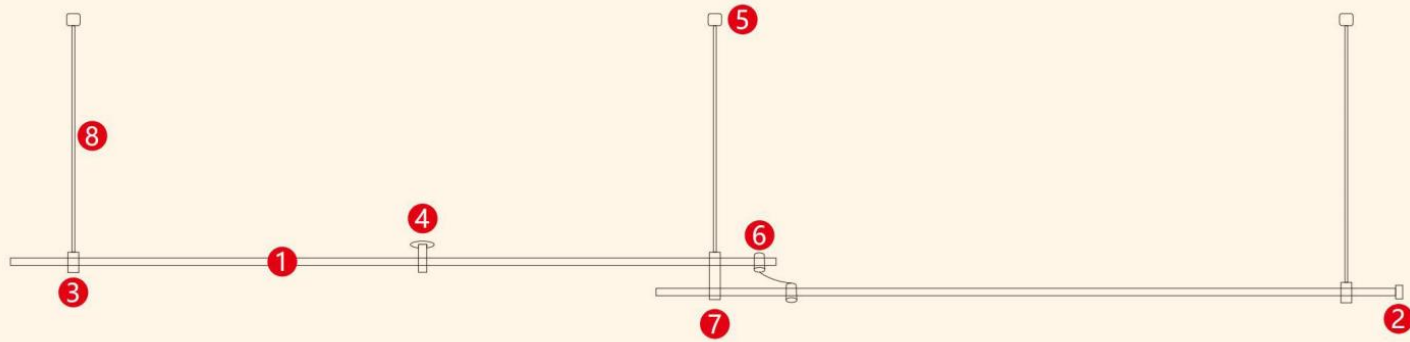


Round Track Rail



AI Track Rail

Components



軌道
Orbit



軌道堵頭
Track plug



輸入模塊
Input module



一體化電源
Integrated power supply



塑料固定
Plastic fixation



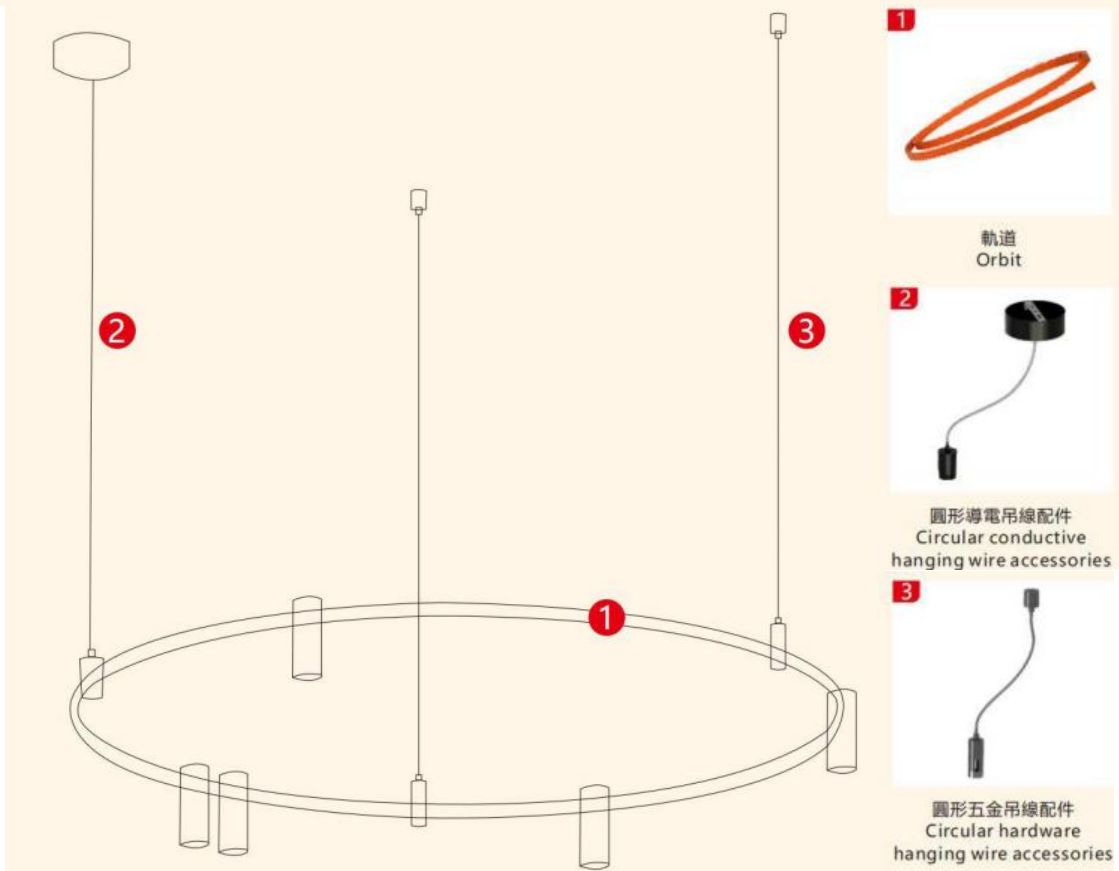
雙頭輸入導電模塊
Dual-head input
conductive module



五金雙層旋轉吊線杆
Double-layer rotating
hanging wire rod for hardware



五金加長杆
Hardware extension rod



軌道
Orbit



圓形導電吊線配件
Circular conductive
hanging wire accessories



圓形五金吊線配件
Circular hardware
hanging wire accessories