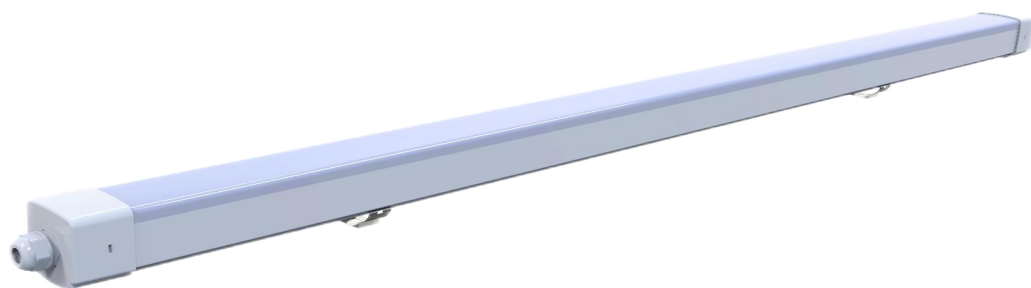
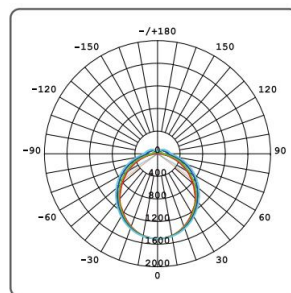


## PRODUCT SPECIFICATION

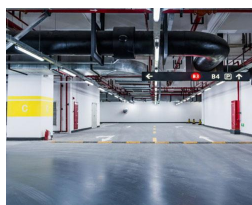
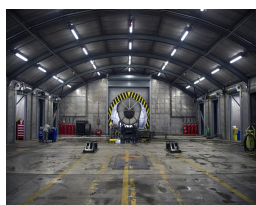


### Features & Benefits

- Dual wattage dial switching
- Uniform shadow-free lighting
- Co-extruded PC housing
- Heat-welded end caps for IP65 protection
- Flexible cross mount fixing points
- Easily installed with one-piece construction
- Improved waterproof plug at the end cap for easy installation
- 3 or 5 years warranty



### Applications



Industrial  
ColdStorage  
Ports  
Facades  
Pools

Tunnels  
Greenhouses  
Parking Lot  
Warehouse  
Wastewater

### Specification



Product	LED Water-proof Light	Ordering Code	Dimension	Watt	Lumens
CRI	>80	PWP060STC	660x57x57mm	20/10W	2600/1300lm
IP Rating	IP65	PWP120STC	1260x57x57mm	40/20W	5200/2600lm
Beam Angle	120°	PWP150STC	1560x57x57mm	50/25W	6500/3250lm
Voltage	200-240V 50/60Hz				
Efficacy	130 lm/w				
Materials	Extruded pc based and opacity pc diffuser				