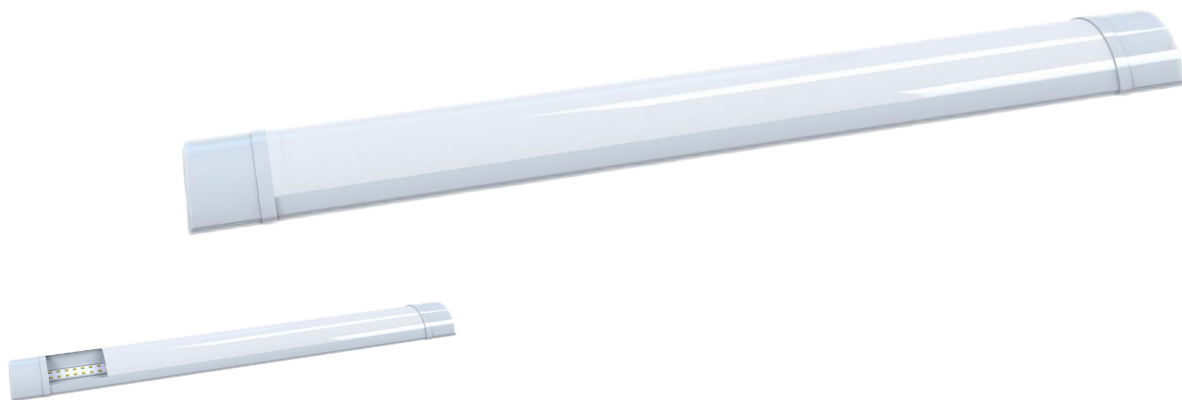
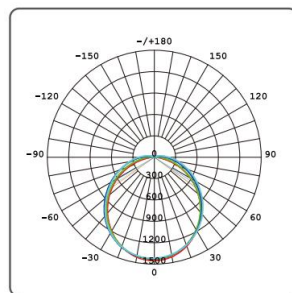


PRODUCT SPECIFICATION

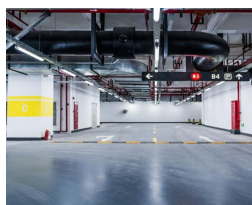
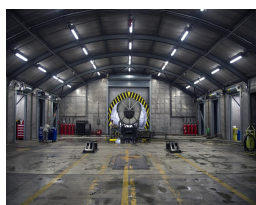


Features & Benefits

- Energy saving and high light efficiency
- Uniform shadow-free lighting
- Co-extruded PC housing
- Heat-welded end caps for IP65 protection
- Flexible cross mount fixing points
- Easily installed with one-piece construction
- Improved waterproof plug at the end cap for easy installation
- 3 or 5 years warranty



Applications



Industrial
ColdStorage
Ports
Facades
Pools

Tunnels
Greenhouses
Parking Lot
Warehouse
Wastewater

Specification



Product	LED Water-proof Light
CRI	>80
IP Rating	IP65
Beam Angle	120°
Voltage	200-240V 50/60Hz
Efficacy	100 lm/w
Materials	Extruded pc based and opacity pc diffuser

Ordering Code	Dimension	Watt	Lumens
PWP060SM	600x74x25mm	20W	2000lm
PWP120SM	1200x74x25mm	40W	4000lm
PWP150SM	1500x74x25mm	45W	4500lm