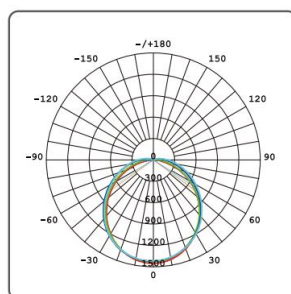


PRODUCT SPECIFICATION

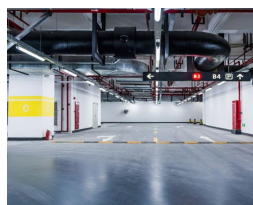
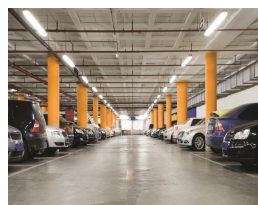
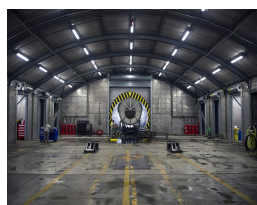


Features & Benefits

- Energy saving and high light efficiency
- Uniform shadow-free lighting
- Co-extruded PC housing
- Heat-welded end caps for IP65 protection
- Flexible cross mount fixing points
- Easily installed with one-piece construction
- Improved waterproof plug at the end cap for easy installation
- 3 or 5 years warranty



Applications



Industrial
ColdStorage
Ports
Facades
Pools

Tunnels
Greenhouses
Parking Lot
Warehouse
Wastewater

Specification



Product	LED Water-proof Light
CRI	>80
IP Rating	IP65
Beam Angle	120°
Voltage	200-240V 50/60Hz
Efficacy	120 lm/w
Materials	Extruded pc based and opacity pc diffuser

Ordering Code	Dimension	Watt	Lumens
PWP060SGC	684x59x56mm	20W	2400lm
PWP120SGS	1264x59x56mm	36W	4320lm
PWP150SGS	1554x59x56mm	48W	5760lm