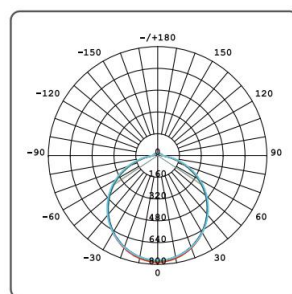


### PRODUCT SPECIFICATION

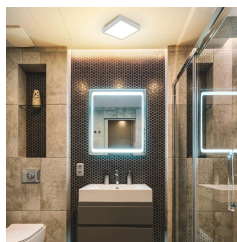
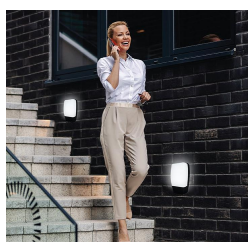


#### Features & Benefits

- Robust Construction: Built with high-quality, impact-resistant materials
- Polycarbonate Body and Diffuser
- Backflip wiring for ease of use
- Highly Efficient LEDs
- IP65 - Water-resistant
- Slim and compact design
- Ideal for both internal and external installations on walls or ceilings
- 3 or 5 years warranty



#### Applications



- Hallways
- Entryways
- Garages
- Outdoor patios
- Office buildings
- Retail spaces
- Parking lots
- Garden porches
- Security lighting

#### Specification



Product	LED Bulkhead Light	Ordering Code	Dimension	Watt	Lumens
CRI	>80	PCL021BL	Φ210x57mm	10W	900lm
IP Rating	IP65	PCL027BL	Φ270x57mm	20W	1800lm
Beam Angle	120°	PCL032BL	Φ320x57mm	24W	2100lm
Voltage	220-240V 50/60Hz				
Efficacy	90 lm/w				
Materials	Polycarbonate body and diffuser				