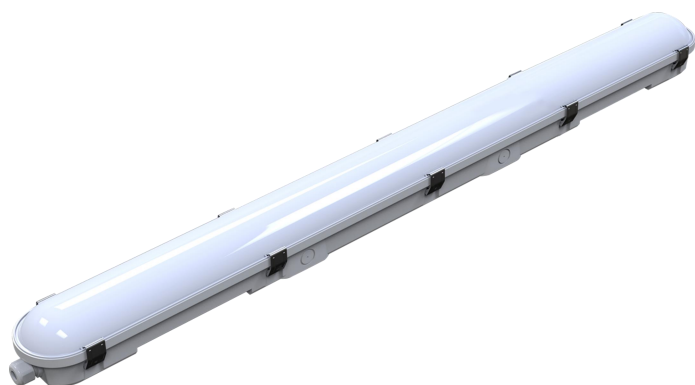
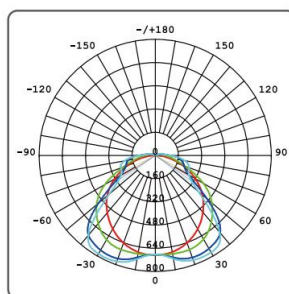


PRODUCT SPECIFICATION

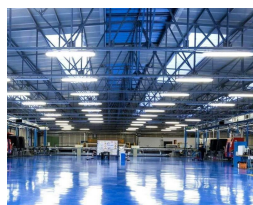
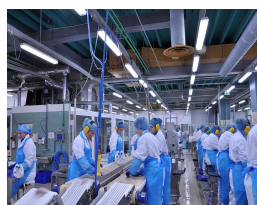


Features & Benefits

- Energy saving and high light efficiency
- Uniform shadow-free lighting
- High-strength impact-resistant housing
- Streamlined appearance design
- Integrated heat dissipation structure
- Easy split-type installation
- Improved waterproof plug at the end cap for easy installation
- 3 or 5 years warranty



Applications



Industrial
ColdStorage
Ports
Facades
Pools

Tunnels
Greenhouses
Parking Lot
Warehouse
Workshop

Specification



Product	LED Water-proof Light	Ordering Code	Dimension	Watt	Lumens
CRI	>80	PWP-60ZHL	670x96x78mm	18W	2520lm
IP Rating	IP65	PWP-120ZHL	1270x96x78mm	36W	5040lm
Beam Angle	120°	PWP-150ZHL	1570x96x78mm	58W	8120lm
Voltage	200-240V 50/60Hz	PWP-180ZHL	1870x96x78mm	68W	9520lm
Efficacy	140 lm/w				
Materials	Extruded pc based and opacity pc diffuser				